

In association with

soho
SOCIETY OF HEMATOLOGIC ONCOLOGY



SERVIZIO SANITARIO REGIONALE
EMILIA-ROMAGNA

Istituto Romagnolo per lo Studio dei Tumori "Dino Amadori"
Istituto di Ricovero e Cura a Carattere Scientifico

ISTITUTO
ROMAGNOLO
PER LO STUDIO
DEI TUMORI
DINO AMADORI

soho Italy
SOCIETY OF HEMATOLOGIC ONCOLOGY

2nd School of MULTIPLE MYELOMA

JOIN US NOW!

Free Registration on

www.sohoitaly.it

30 JUN. 2022

01 JUL. 2022

Rome, Italy & Virtual

Hotel NH Collection
Roma Vittorio Veneto

Follow Us!



Organizing secretariat

Proeventi

www.proeventi.it
info@proeventi.it



Patronage



**istituto
oncologico
romagnolo**

vicino a chi soffre,
insieme a chi cura



**Ordine
Nazionale
Biologi**

SIE
**Società Italiana
di Ematologia**

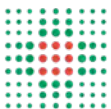


SOCIETÀ ITALIANA DI FARMACOLOGIA

In Association with



Promoted by



**SERVIZIO SANITARIO REGIONALE
EMILIA-ROMAGNA**

Istituto Romagnolo per lo Studio dei Tumori "Dino Amadori"
Istituto di Ricovero e Cura a Carattere Scientifico

**ISTITUTO
ROMAGNOLO
PER LO STUDIO
DEI TUMORI
DINO AMADORI**





SUMMARY

| | |
|------------------------|----|
| With the Patronage | 1 |
| Summary | 3 |
| About SOHO Italy | 4 |
| Presidents | 6 |
| Scientific Board | 7 |
| Scientific Secretariat | 8 |
| Big Faculty | 8 |
| Young Faculty | 9 |
| Rationale | 10 |
| Key Information | 12 |
| General Information | 13 |
| Public Transport | 14 |
| Program Table | 16 |
| 30 Jun | 20 |
| 01 Jul | 24 |





What is SOHO Italy?

The Italian Society of Hematologic Oncology is bringing together leading SOHO experts and top Italian researchers in acute leukemias, MPDs and MDSs, aims to consolidate the Italian Hematology-SOHO partnership.

Purpose

The aim of the association is the integration of the clinical-scientific activities of IRST Meldola and MD Anderson Cancer Center and the improvement of the clinical-therapeutic approach to patients with hematologic malignancies.

Represented by

The Society SOHO Italy is represented by G. Martinelli and C. Cerchione, IRST Meldola, and H. Kantarjian, E. Jabbour, M. Konopleva, N. Daver, MD Anderson Cancer Center.



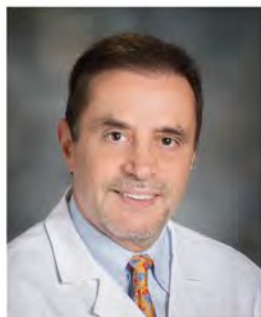
President

Claudio Cerchione



Since 2018, he works in Hematology Unit of Istituto Scientifico Romagnolo per lo Studio e la Cura dei Tumori Dino Amadori (IRST) IRCCS. He also has spent international research experiences in Friedrich-wilhelms universität, Bonn, Germany, in Universidade de Coimbra, Portugal, collaborating in their clinical and research projects, and in MD Anderson Cancer Center, Houston, USA, where he was nominated Ambassador of SOHO (Society of Hematologic Oncology). He is member of the editorial boards of many scientific journals, and member of several international societies, including the Society of Hematologic Oncology (SOHO), American Society of Hematology (ASH), European Hematology Association (EHA) and Italian Society of Hematology (SIE).

Hagop Kantarjian



Hagop Kantarjian, M.D. is professor and chair of the Department of Leukemia at The University of Texas MD Anderson Cancer Center, where he is also the Samsung Distinguished Leukemia Chair in Cancer Medicine. He is also a non-resident fellow in health policy at the Rice University Baker Institute. Doctor Kantarjian has received several prestigious honours and awards including the 37th Jeffrey A Gottlieb Memorial Award (2012), the John Mendelsohn Lifetime Scientific Achievement Award (2008), the Joseph H. Burchenal Memorial Award (2013), the Charles A. LeMaistre, M.D. Outstanding Achievement Award in Cancer (2014), and America's Top Doctors, Castle Connolly Medical (2003 - present). He was also selected the top Castle Connolly National Physician of the Year Award for Lifetime Achievement (2014). Doctor Kantarjian's research focuses on translational-clinical developmental therapeutics.

Giovanni Martinelli



As of 1 January 2018, Professor Giovanni Martinelli is scientific director of Istituto Scientifico Romagnolo per lo Studio e la Cura dei Tumori Dino Amadori (IRST) IRCCS, in Meldola (FC), Italy. Until December 2017, Professor Giovanni Martinelli was associate professor of Hematology at the Institute of Hematology "L. & A. Seragnoli", Azienda Ospedaliera S. Orsola - Malpighi at the University of Bologna, Italy. His main fields of research are AML, ALL and CML, including research on targeted therapies in major hematological syndromes: Acute Leukemias, CML (both Philadelphia-chromosome positive and non - positive), and hypereosinophilic syndrome.



Scientific Board



Anderson Kenneth



Cerchione Claudio



Lee Hans C



Martinelli Giovanni



Mateos Maria Victoria



Scientific Secretariat

D. Cangini
M. Ceccolini
C. Cerchione
G. Martinelli
G. Musuraca
S. Ronconi

Special Coach: Alessandra Romano

Big Faculty

K. C. Anderson
M. Boccadoro
M. Cavo
C. Cerchione
D. Derudas
F. Di Raimondo
F. Gay
M. Gentile
H. C. Lee
F. Malavasi
G. Martinelli
M. Martino
M.V. Mateos
P. Neri

A. Olivieri
A. Paulus
A. Romano
C. Terragna
P. Tosi



Young Faculty

TBD

Hematology Reports



MULTIPLE MYELOMA

Rationale

In the last decades, survival rates of Multiple Myeloma have been brilliantly improved thanks to the introduction of novel agents: patients diagnosed after 2010 have had higher rates of novel therapy use and better survival outcomes compared with those of earlier years. Most relevant therapeutic advances over the past decades has been the introduction of novel therapies, such as immune-modifying agents (thalidomide and lenalidomide) and proteasome inhibitors (bortezomib), adopted with or without stem cell transplantation.

Moreover, in the last few years, the MM therapeutic “toolbox” has improved further with the approval in new generation IMiD (pomalidomide), the monoclonal antibodies, daratumumab and elotuzumab, as well as the new-generation proteasome inhibitors, carfilzomib and ixazomib, waiting for introduction in daily practice of novel agents with new mechanism of action (Belantamab, CART).



At the same time, there is increasing understanding of MM tumor biology, creating the rationale for new combinations of drugs and new therapy development. Discovery of the associated cytogenetic abnormalities confirm the hypothesis that MM is a heterogeneous disease, suggesting that risk-adapted therapies and individualizing treatment will further help improve patient management.

In this scenario, our aim is to create a international team, integrating a big faculty composed by international experts, which will integrate with a group of young researchers with known experience in this disease (“SOHO Multiple Myeloma cantera”), in order to share projects and preclinical and clinical new clinical trials, in different fields of this heterogeneous disease.

The “cantera” (Under40) will be selected through projects’ submission and CV evaluation, which will be performed by the big faculty, and will be able to be integrated in next editions.



Key Information

VENUE

NH Collection Roma Vittorio Veneto
Corso d'Italia, 1, 00198 Roma, Italy

MEETING


30 jun 2022
01 jul 2022

| | Ita | Tx |
|--|---------------|---------------------|
| | 09.00 - 19.20 | 02.00 am - 12.20 pm |
| | 08.30 - 18.30 | 01.30 am - 11.30 pm |

SOCIAL MEDIA

Soho Italy is active on various social media platform. Follow us on the networks below and get real-time updates:

 Facebook: Soho Italy

 Twitter: @sohoitaly

 LinkedIn: Soho Italy

 Instagram: sohoitaly

#SOHOItaly2022

INTERNET

WiFi is available in all areas.





General Information

LANGUAGE

The official language during the congress is English, therefore, all presentations will be given in English.

CLIMATE

The average temperature is around 20 - 32 degrees.

BANKING SERVICE

The official currency in Rome is the Euro. Foreign currencies can be exchanged at banks, which are usually open from Monday to Friday from 08:30 to 13:30.

HOTEL INFORMATION

For hotel information and reservations please visit the Hotels & Groups Desk.

TAXI

The single number to call a taxi is 060609, for other utilities on the taxi service, see www.060608.it.





Public Transports

From Fiumicino Airport

Train: The hotel is located 30 km from the airport. You may take a train to Stazione Termini. From there, you can take the underground (Line A) and get off at either Barberini or Spagna.

Taxi: It's a 37 minutes trip and is around €65.

Aerobus shuttle: Departs every 30 - 45 minutes and costs 6€. Drop off at Stazione Termini and from there its the Bus line 910 toward Mancini for 4 stops.

From the train station

Closest metro station: Barberini

100min Ticket: 1.50€ 24h Ticket: 7.00€ 48h Ticket: 12.50€ 72h Ticket: 18.00€ 7-day Ticket: 24.00€

By car

The hotel's GPS Coordinates: 41.91018°N; 12.49030300000004°E

Parking: Offsite. €5/hour, €30-40 per day depending on the model of the car





Program Table

28 Jun

| | Ita | Tx |
|-------|---|-----------------|
| 08.00 | | |
| 09.00 | 09.00 | 02.00 am |
| | Opening and introduction to the project | |
| 10.00 | 09.20 | 02.20 am |
| 11.00 | Biology and Imaging in Multiple Myeloma: from old to new tools | |
| 12.00 | | |
| 13.00 | | |
| 14.00 | 14.00 | 07.00 am |
| | SOHO Italy Symposium: CD38 in basic science and Clinical practice: reflecting on the past to move to the future | |
| 15.00 | | |
| 16.00 | 15.40 | 08.40 am |
| 17.00 | Clinical Session 1 · Multiple Myeloma: State of the art | |
| 18.00 | | |
| 19.00 | | |
| 20.00 | | |
| 21.00 | | |
| 16 | | |



29 Jun

Ita

Tx

08.00

08.30

01.30 am

09.00

Opening of 2nd Day

09.00

02.00 am

10.00

Clinical Session 2 - Frontline transplant-eligible setting

11.00

12.00

11.30

04.30 am

Clinical Session 3 - Transplant-inegible setting
and selected conditions

13.00

14.00

15.00

15.00

08.00 am

Clinical Session 4 - Near future and new perspectives
in Multiple Myeloma

16.00

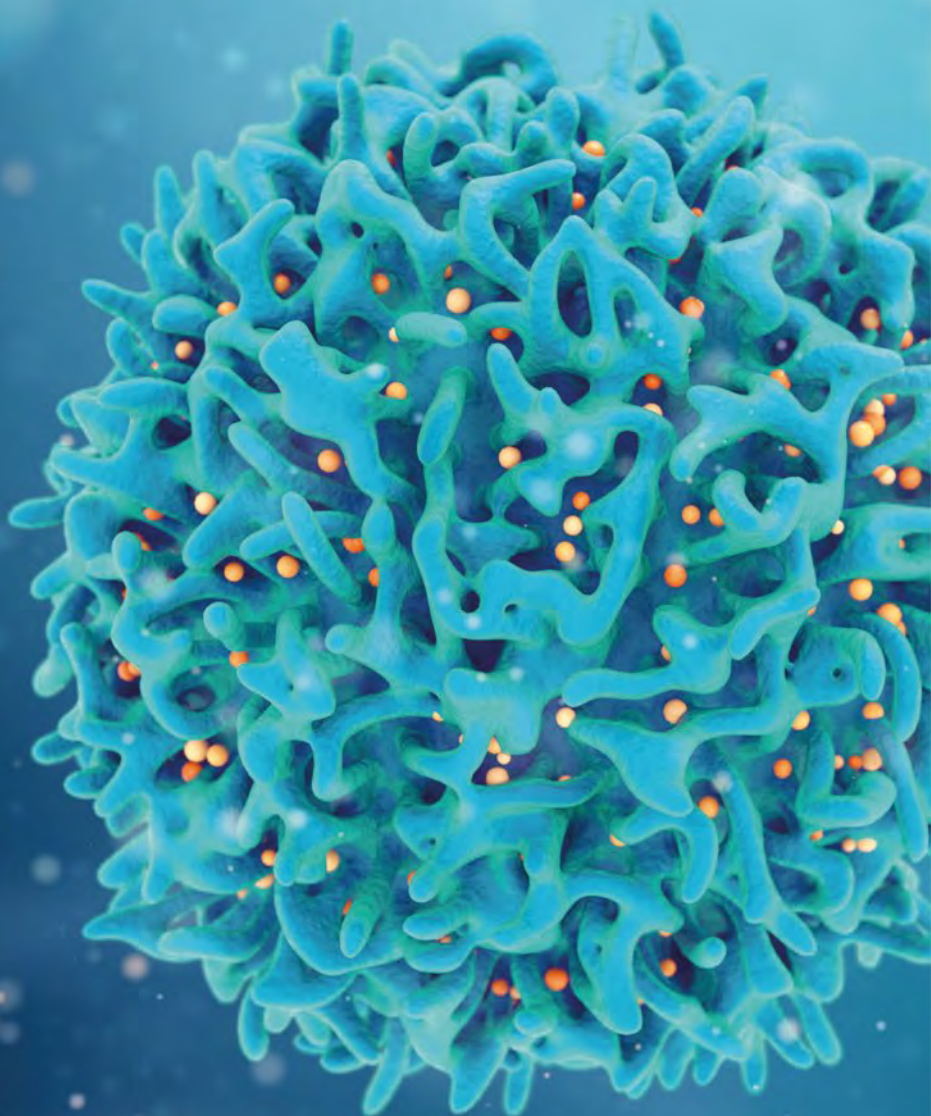
17.00

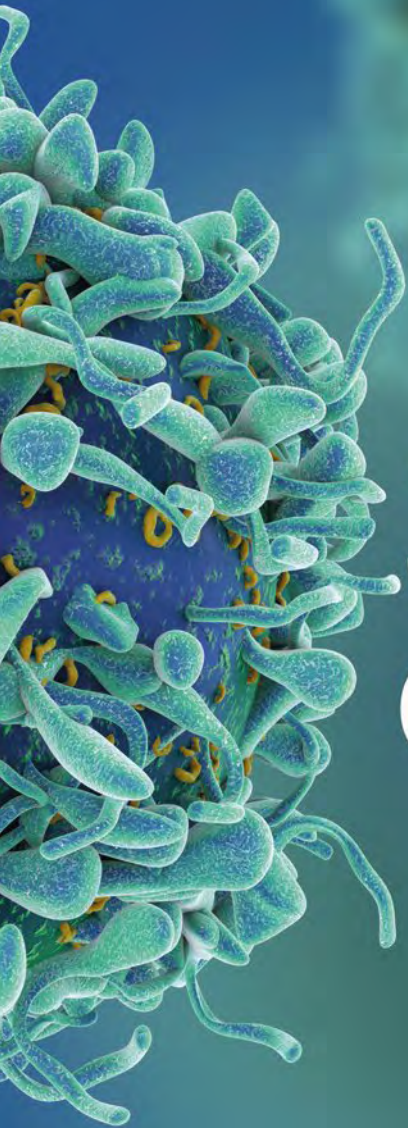
18.00

19.00

20.00

21.00





30
06.22



FRONTAL SESSION

09.00 Opening and introduction to the project
C. Cerchione, G. Martinelli

BIOLOGY AND IMAGING IN MULTIPLE MYELOMA: FROM OLD TO NEW TOOLS

Chairs: G. Martinelli

09.20 New insights in molecular pathogenesis of Multiple Myeloma
P. Neri

09.40 Exploring microenvironment – from biology to therapy
A. Romano

10.00 Importance of network in Multiple Myeloma: where are we going?
G. Martinelli

10.20 Coffee Break

10.40 Oral Communication 1 - Biology and Imaging in Multiple Myeloma:
from old to new tools 1

11.00 Oral Communication 2 - Biology and Imaging in Multiple Myeloma:
from old to new tools 2

11.20 Oral Communication 3 - Biology and Imaging in Multiple Myeloma:
from old to new tools 3

11.40 Discussion – Questions and Answers



SOHO ITALY SYMPOSIUM CD38 IN BASIC SCIENCE AND CLINICAL PRACTICE: REFLECTING ON THE PAST TO MOVE TO THE FUTURE

Chairs: M. Boccadoro, C. Cerchione, F. Malavasi, A. Paulus

12.00 CD38 in basic science and clinical practice: reflecting on the past to move to the future

F. Malavasi

12.20 Targeting CD38 to reshape the tumor immune microenvironment and its clinical impact in hematological malignancies

A. Paulus

12.40 Introducing anti-CD38 in daily practice of Multiple Myeloma

C. Cerchione

13.00 Making the history of Multiple Myeloma in EMN Clinical Trials: where are we going

M. Boccadoro

13.20 Discussion

13.40 Lunch

CLINICAL SESSION 1 MULTIPLE MYELOMA: STATE OF THE ART

Chairs: K.C. Anderson, M. Cavo, C. Cerchione, H.C. Lee, M.V. Mateos

15.00 Management of smoldering Multiple Myeloma: past, present and future

M.V. Mateos

15.20 Present and future of management of relapsed/refractory Multiple Myeloma

C. Cerchione



15.40 Managing Relapse Following Novel Immune Therapies
K.C. Anderson

16.00 Antibody-Drug Conjugates (ADCs) and Bispecific T-cell Engagers (TCEs) in Multiple Myeloma: how are they changing the current panorama
H. Lee

16.20 Established and new options for maintenance therapy
M. Cavo

16.40 Discussion

17.00 Coffee Break

17.20 Oral Communication 4 - Multiple Myeloma - Clinical 1

17.40 Oral Communication 5 - Multiple Myeloma - Clinical 2

18.00 Oral Communication 6 - Multiple Myeloma - Clinical 3

18.20 Discussion

18.40 Conclusions of 1st Day
C. Cerchione, G. Martinelli



01
07.22



08.30 Opening of 2nd Day
C. Cerchione, G. Martinelli

CLINICAL SESSION 2

FRONTLINE TRANSPLANT-ELIGIBLE SETTING

Chairs: M. Cavo, A. Olivieri

09.00 How I manage frontline Multiple Myeloma
C. Cerchione

09.20 Role of allogenic stem cell transplantation in MM in novel agents era
A. Olivieri

09.40 Oral Communication 7 - Multiple Myeloma - Clinical 4

10.00 Oral Communication 8 - Multiple Myeloma - Clinical 5

10.20 Oral Communication 9 - Multiple Myeloma - Clinical 6

10.40 Discussion

11.00 Coffee Break

CLINICAL SESSION 3

TRANSPLANT-INELEGIBLE SETTING AND SELECTED CONDITIONS

Chairs: D. Derudas , P. Tosi

11.30 Frail patients: from old to new options – what we have learnt
P. Tosi

11.50 Extramedullary disease and plasma cell leukemia
D. Derudas

12.10 Balancing efficacy and tolerability in novel agents-based treatments
M. Gentile



12.30 Oral Communication 10 - Multiple Myeloma - Clinical 7

12.50 Oral Communication 11 - Multiple Myeloma - Clinical 8

13.10 Discussion

13.30 Lunch

CLINICAL SESSION 4 NEAR FUTURE AND NEW PERSPECTIVES IN MULTIPLE MYELOMA

Chairs: F. Di Raimondo, C. Terragna

15.00 Importance of Minimal Residual Disease assessment within the bone marrow of Multiple Myeloma

C. Terragna

15.20 New drugs on the horizon in Italy - from present to the nearest approvals

F. Di Raimondo

15.40 Bench-to-Bedside Development of a unique Bcl-2 inhibitor for Treatment of Multiple Myeloma

A. Paulus

16.00 CART from clinical trials to real world: lights and shadows in Italy

M. Martino

16.20 Oral Communication 12 - Multiple Myeloma - Clinical 9

16.40 Oral Communication 13 - Multiple Myeloma - Clinical 10

17.00 Oral Communication 14 - Multiple Myeloma - Clinical 11

17.20 Oral Communication 15 - Multiple Myeloma - Clinical 12

17.40 Discussion - Questions and Answers



18.00 Special Lecture

Multiple myeloma cured in 2030: what are the next steps?

K. Anderson

18.30 Special Lecture

Ongoing and nearest clinical trials of European Myeloma Network (EMN)

F. Gay

19.00 Conclusions and awards

C. Cerchione, G. Martinelli



Supported by an unrestricted educational grant from

Celgene | Bristol Myers Squibb™
Company

Janssen Oncology

PHARMACEUTICAL COMPANIES OF Johnson & Johnson

sanofi



Media Partner

PHARMASTAR★
il Giornale online sui Farmaci



VJHEM○NC
The Video Journal of Hematological Oncology



Follow Us!

The use of social media is extremely important to build a stronger relationship and to improve the interaction between speakers and attendees, so do not forget to use them!

Our official hashtag is **#SOHOItaly22**

You can use it on **Facebook, Twitter, Instagram** and **Linkedin**.

Put your like on our social pages and follow us!

You can tweet with:

@sohoitaly

@SocietyofHemOnc

@IRSTufficiale

@MDAndersonNews

@pro_eventi

@GMartinelli2

@DottorClaudio

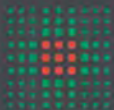
@DrHKantarjian

@Daver_Leukemia

**Enjoy & Share
your experience!**

Follow us





SERVIZIO SANITARIO REGIONALE
EMILIA-ROMAGNA

Istituto Romagnolo per lo Studio dei Tumori "Dino Amadori"
Istituto di Ricovero e Cure a Carattere Scientifico

ISTITUT
ROMAGN
PER LO
DEI TUM
DINO
LO
STUDIO
RI
AMADORI